



NAKATOMI

KOOLZONE

MOBILE SPOT COOLER

QUICK GUIDE FOR **SAC-4500**



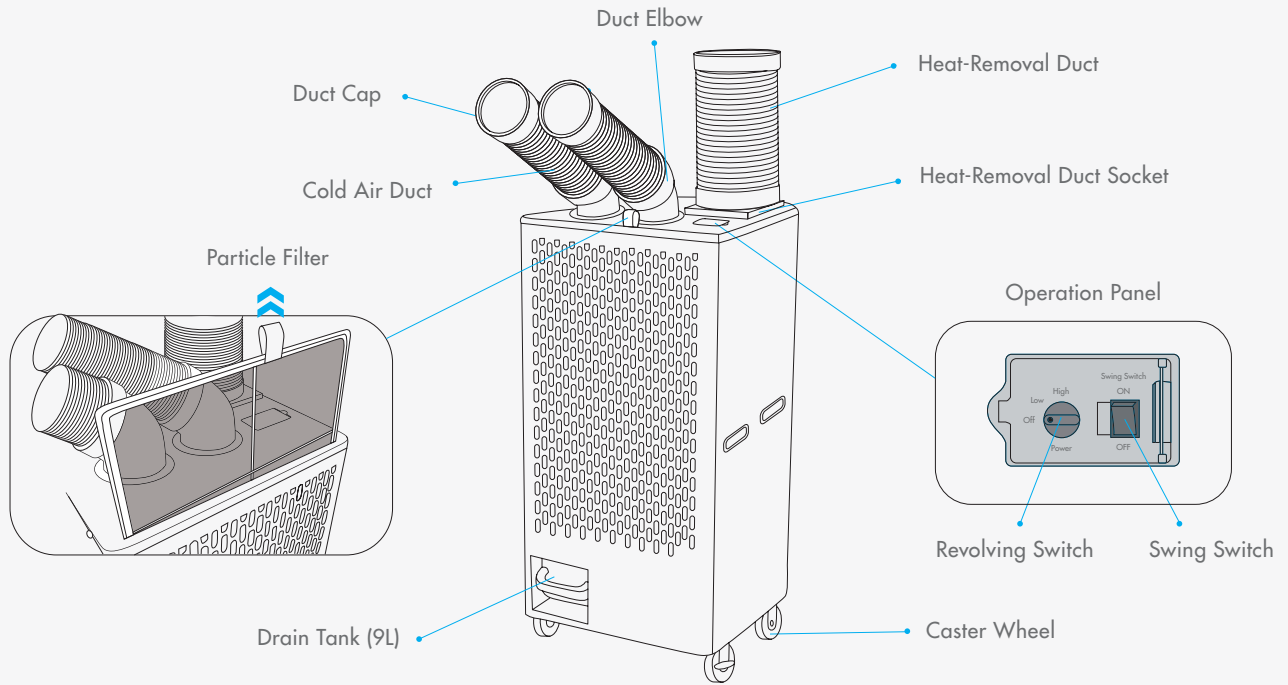
THANK YOU FOR PURCHASING THE KOOLZONE MOBILE SPOT COOLER.
PLEASE READ THE INSTRUCTIONS BEFORE USING.
AND PLEASE KEEP THESE INSTRUCTIONS FOR REFERENCE.



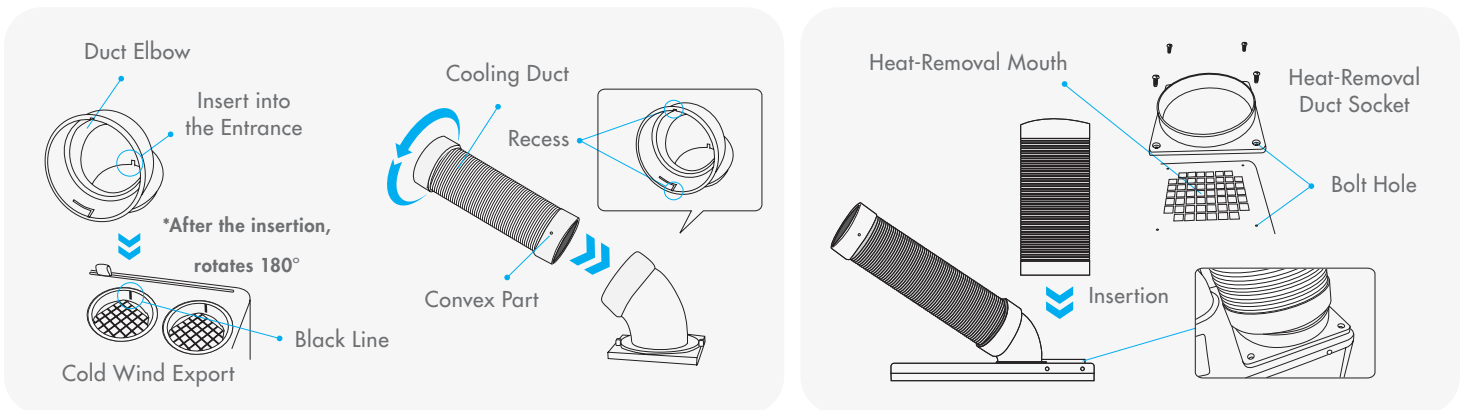
UNINEX INTERNATIONAL

5780 SMITHWAY STREET COMMERCE, CA 90040
T. 800-864-3288 / 323-890-9246 / F. 323-890-9249

PARTS OF THE MACHINE



MANUAL - COLD AIR DUCT / HEAT-REMOVAL DUCT FITTING



INSTALLATION

1. The elbow inserts the entrance alignment the black line of the cold wind export and press in, revolving 180°.
2. Fit the recess of the elbow into the convex of the duct, then turn it anti clockwise until it stops.

*Note - Please do not add other accessories, or fit extended duct on the cold air duct to avoid damage.

Do not cover to the air outlet of cold air duct.

3. How to install the heat-removal duct : The heat-removal duct socket uses 4 ST4x12 bolts to fix on the heat-removal mouth.

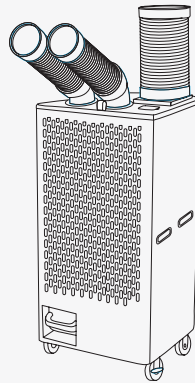
When inserting the heat-removal duct, please note the heat-removal mouth recess.

IMPORTANT - KEEP DISTANCE

Cooling Outlet
Direction above 30cm

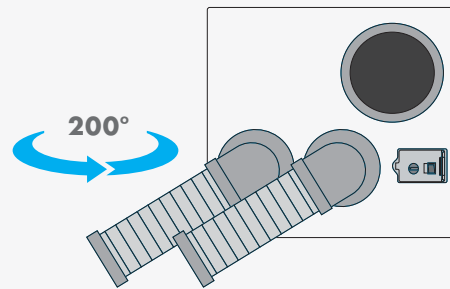
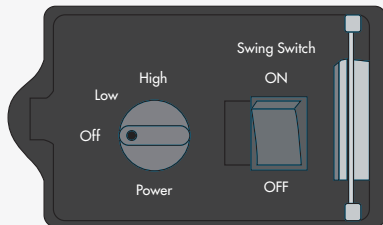


Air Outlet
Direction above 30cm

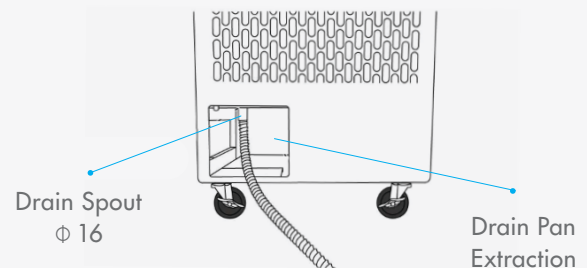
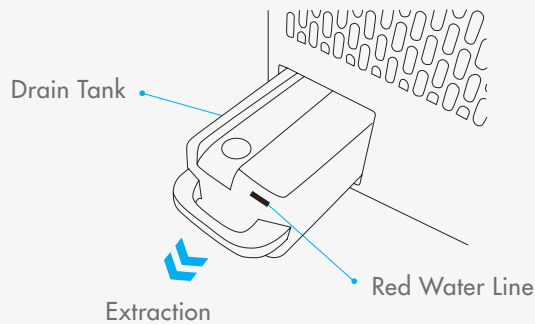


Heating Outlet
Direction above 80cm

TURN THE SPOT COOLER ON/ DIRECTION ADJUSTMENT

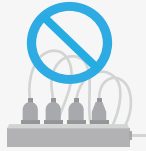


DRAIN TANK / DIRECT DRAIN





KOOLZONE MANUFACTURER'S RECOMMENDATIONS



1. USE A DEDICATED OUTLET. DO NOT SHARE AN OUTLET WITH OTHER DEVICES.
SHARING AN OUTLET MAY CAUSE A POWER CUT.



2. USING AN EXTENSION CORD IS NOT RECOMMENDED.
IF AN EXTENSION CORD IS NEEDED, USE 12 AWG OR THICKER GAUGE.



3. DO NOT BLOCK THE HEAT EXHAUST OUTLET.
(DO NOT PLACE SAC1800 TOO CLOSE TO THE WALL.)
IT MAY BLOCK THE HEAT OUTLET AND CAUSE THE SPOT COOLER TO
STOP WORKING PROPERLY.



4. FOR OPTIMUM PERFORMANCE, USE ONLY UP TO A MAXIMUM OF
12 FT OF HEAT/COOL EXTENSION DUCT.



PLEASE NOTE

OPTIMUM OPERATING TEMPERATURE RANGE FOR
KOOLZONE MOBILE SPOT A/C COOLER
IS FROM **64 - 104°** FAHRENHEIT.

PROPER USAGE OF THIS UNIT, AT THE COOLING DUCT,
WILL REDUCE THE AMBIENT TEMPERATURE
BETWEEN **10 - 15°** FAHRENHEIT.

MAKE LIFE SIMPLE AND MORE CONVENIENT
WITH UNINEX



SCAN ME

CONTACT US FOR PURCHASE OR RENTAL



EXCLUSIVELY DISTRIBUTED BY:
UNINEX INTERNATIONAL

5780 SMITHWAY STREET COMMERCE, CA 90040
T. 800-864-3288 / 323-890-9246 / F. 323-890-9249



MANUFACTURE:
NAKATOMI CO.,LTD.

6445-2, TAKAI, TAKAYAMA, KAMITAKAI, NAGANO, JAPAN