



NAKATOMI

KOOLZONE

MOBILE SPOT COOLER

QUICK GUIDE FOR **SAC-6500**



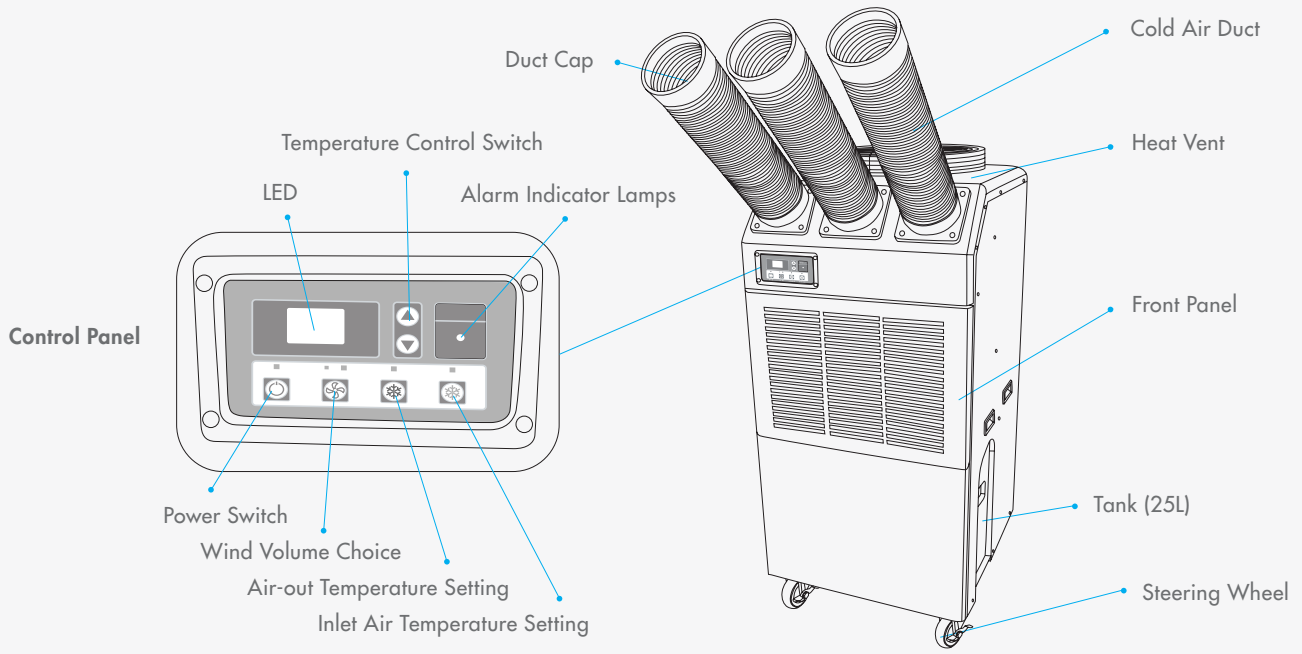
THANK YOU FOR PURCHASING THE KOOLZONE MOBILE SPOT COOLER.
PLEASE READ THE INSTRUCTIONS BEFORE USING.
AND PLEASE KEEP THESE INSTRUCTIONS FOR REFERENCE.



UNINEX INTERNATIONAL

5780 SMITHWAY STREET COMMERCE, CA 90040
T. 800-864-3288 / 323-890-9246 / F. 323-890-9249

PARTS OF THE MACHINE



MANUAL - COLD AIR DUCT FITTING

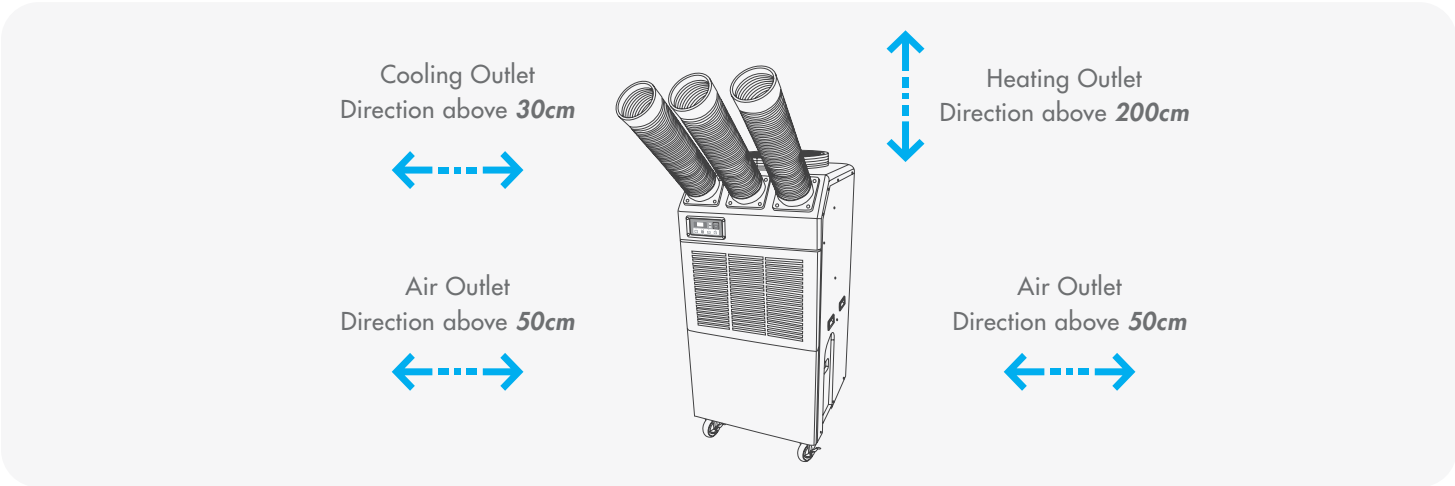


INSTALLATION

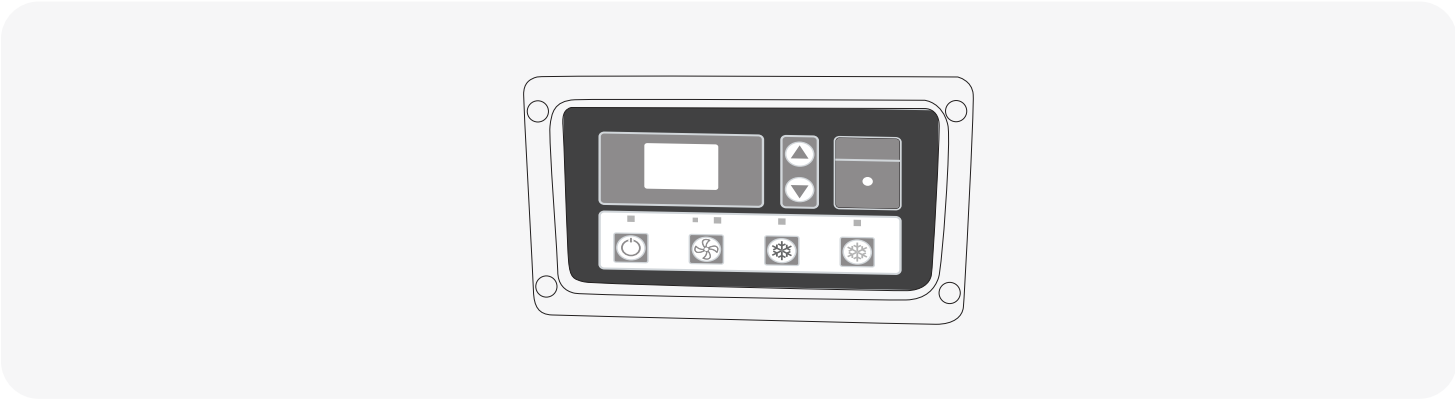
Installation of Cold Air Duct: Fasten the cold air duct above the cold air outlet with four screws.

*Note - Please do not replace the cold air duct with other accessories. Do not cover anything on the cold air outlet.

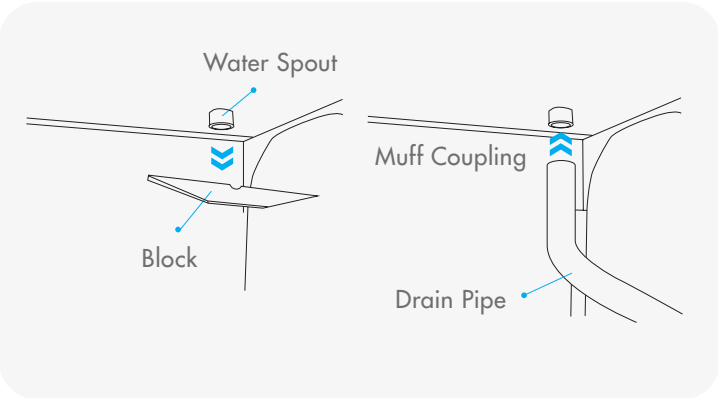
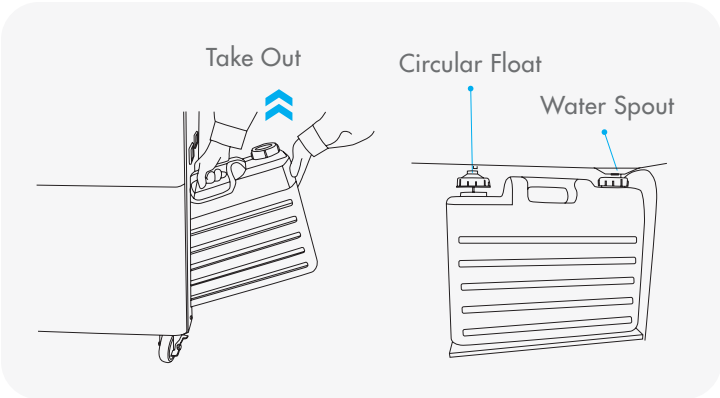
IMPORTANT - KEEP DISTANCE



TURN THE SPOT COOLER ON

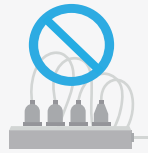


DRAIN TANK / DIRECT DRAIN





KOOLZONE MANUFACTURER'S RECOMMENDATIONS



1. USE A DEDICATED OUTLET. DO NOT SHARE AN OUTLET WITH OTHER DEVICES.
SHARING AN OUTLET MAY CAUSE A POWER CUT.



2. USING AN EXTENSION CORD IS NOT RECOMMENDED.
IF AN EXTENSION CORD IS NEEDED, USE 12 AWG OR THICKER GAUGE.



3. DO NOT BLOCK THE HEAT EXHAUST OUTLET.
(DO NOT PLACE SAC1800 TOO CLOSE TO THE WALL.)
IT MAY BLOCK THE HEAT OUTLET AND CAUSE THE SPOT COOLER TO
STOP WORKING PROPERLY.



4. FOR OPTIMUM PERFORMANCE, USE ONLY UP TO A MAXIMUM OF
12 FT OF HEAT/COOL EXTENSION DUCT.



PLEASE NOTE

OPTIMUM OPERATING TEMPERATURE RANGE FOR
KOOLZONE MOBILE SPOT A/C COOLER
IS FROM **64 - 104°** FAHRENHEIT.

PROPER USAGE OF THIS UNIT, AT THE COOLING DUCT,
WILL REDUCE THE AMBIENT TEMPERATURE
BETWEEN **10 - 15°** FAHRENHEIT.

MAKE LIFE SIMPLE AND MORE CONVENIENT
WITH UNINEX



SCAN ME

CONTACT US FOR PURCHASE OR RENTAL



EXCLUSIVELY DISTRIBUTED BY:
UNINEX INTERNATIONAL

5780 SMITHWAY STREET COMMERCE, CA 90040
T. 800-864-3288 / 323-890-9246 / F. 323-890-9249



MANUFACTURE:
NAKATOMI CO.,LTD.

6445-2, TAKAI, TAKAYAMA, KAMITAKAI, NAGANO, JAPAN