

KoolBase

MOBILE SPOT COOLER

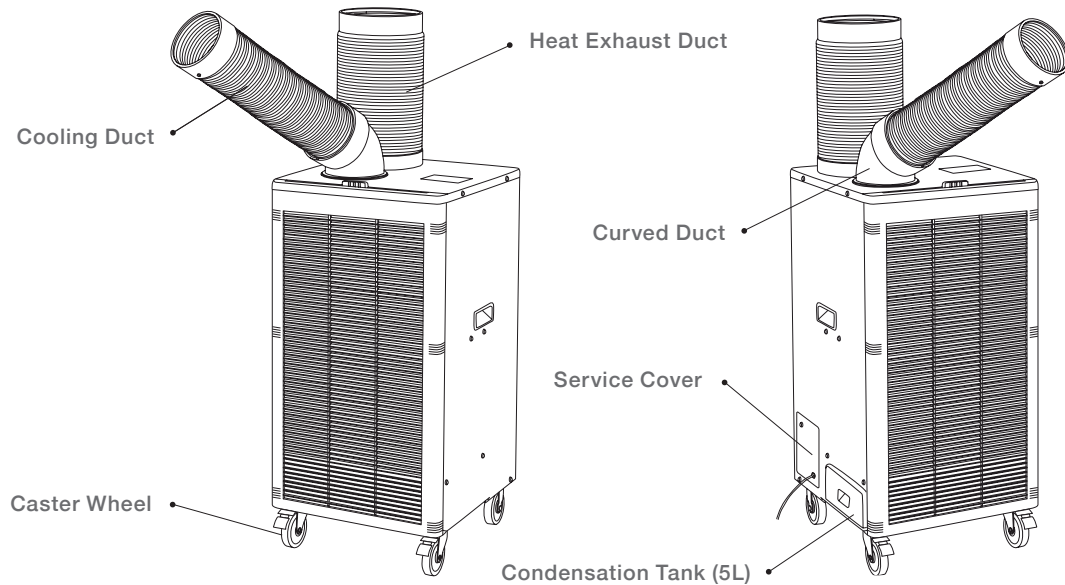
QUICK GUIDE
MSC407NE



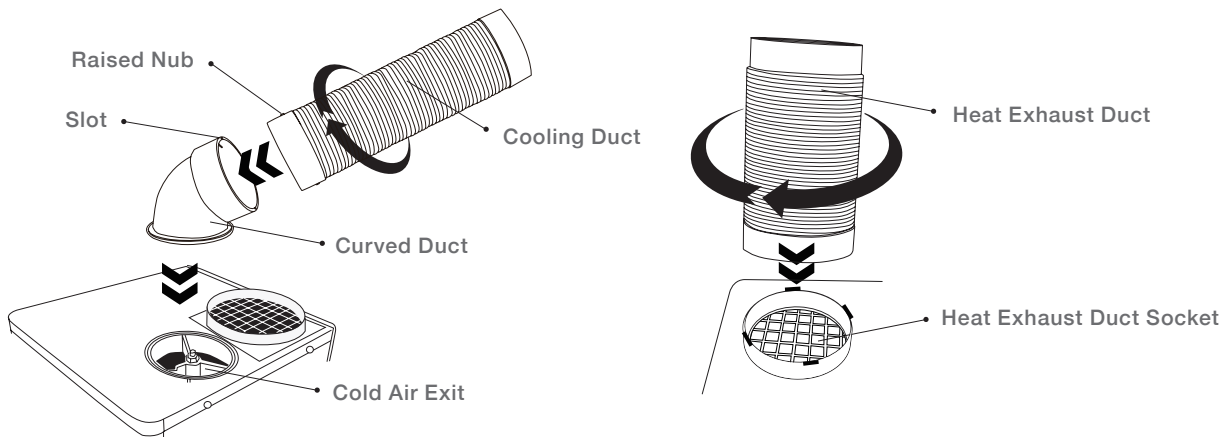
THANK YOU FOR PURCHASING THE KOOLBASE MOBILE SPOT COOLER.
PLEASE READ THE INSTRUCTIONS BEFORE USING.
KEEP THESE INSTRUCTIONS FOR REFERENCE.

KoolBase

PARTS OF THE MACHINE



COOLING DUCT / HEAT EXHAUST DUCT INSTALLATION



• INSTALLING THE CURVED DUCT

Center it above the cold air exit and push down until curved duct clicks in place. It will rotate 360°.

• INSTALLING THE COOLING DUCT

Slide the cooling duct raised nub in to the slot of the curved duct. Then turn clockwise to lock.

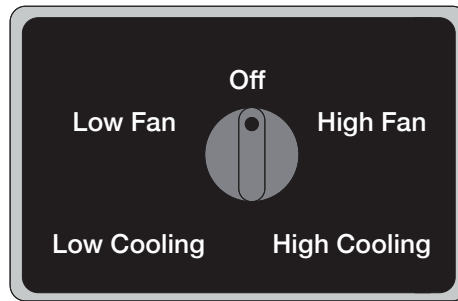
Make sure the duct is connected properly before using.

When adjusting the direction, turn the curved duct instead of the cooling duct.

• INSTALLING THE HEAT EXHAUST DUCT AND SOCKET

Center it above the heat exhaust duct socket and twist until the heat exhaust duct is in place.

OPERATING INSTRUCTION



To power on, turn on the switch at the top of the unit to either low / high fan or low / high cooling for operation.

THERE ARE 4 OPTIONS:

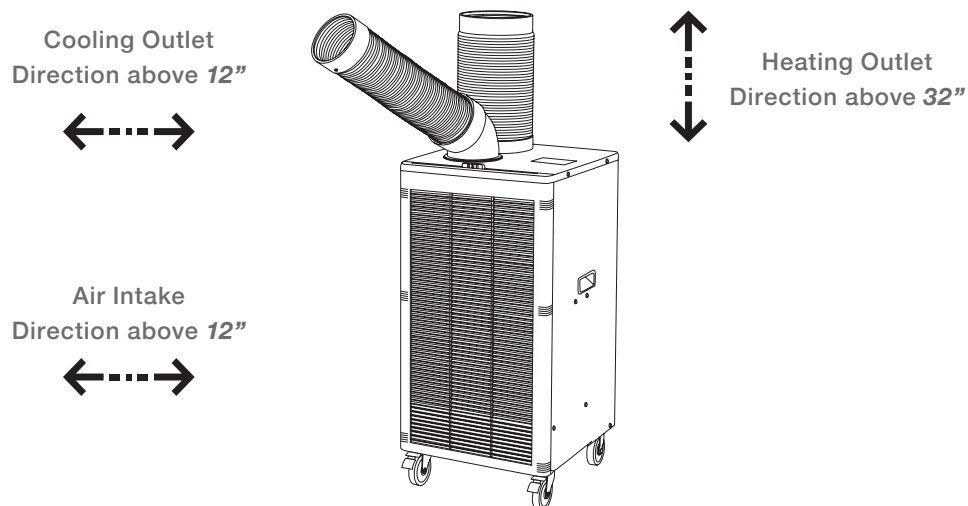
- Low Fan - Light air flow at ambient temperature.
- High Fan - Strong air flow at ambient temperature.
- Low Cooling - Sends a flow of cold air at low fan speed.
- High Cooling - Sends a flow of cold air at high fan speed.

⚠ NOTIFICATION

- Operating temperature is between 64°F to 104°F.
- If you use the unit out of the temperature range, it may not work properly.
- Do not overload the electrical system by using too many devices off one outlet.

IMPORTANT - KEEP DISTANCE

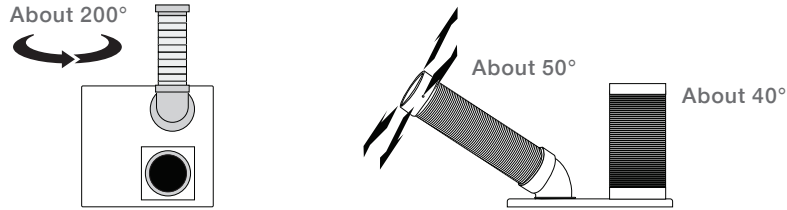
Make sure the unit has minimum distance from any wall, ceiling, or object as illustrated below.



KoolBase

ADJUSTING THE AIR FLOW DIRECTION

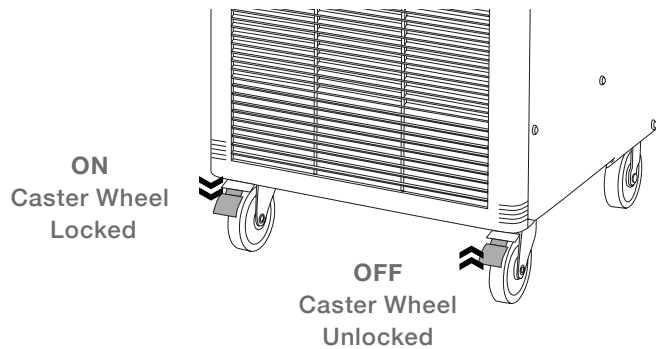
Adjust the duct to the desired cooling and heating direction. The cooling duct adjustment range is 200° horizontal and 50° vertical. The heat exhaust duct adjustment range is 40°.



Adjust the angle of the cooling duct and heating exhaust duct before using the unit.
Hold the curved duct and bend the cooling duct for angle adjustment.

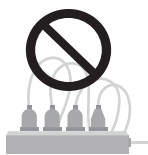
CASTER WHEEL LOCK / UNLOCK

The front wheels come with locks. For safety, lock the casters and check the unit for movement.





KOOLBASE MANUFACTURER'S RECOMMENDATIONS



1. USE A DEDICATED OUTLET. DO NOT SHARE AN OUTLET WITH OTHER DEVICES.
SHARING AN OUTLET MAY CAUSE A POWER OUTAGE.



2. IF USING AN EXTENSION CORD, A 12 AWG IS RECOMMENDED.



3. DO NOT BLOCK THE HEAT EXHAUST DUCT.
BLOCKING THE HEAT EXHAUST COULD CAUSE THE UNIT
TO OVERHEAT AND STOP WORKING PROPERLY.



PLEASE NOTE

OPTIMUM OPERATING TEMPERATURE RANGE FOR
KOOZONE MOBILE SPOT A/C COOLER
IS FROM *64 - 104°* FAHRENHEIT.

WHEN USING THIS UNIT ON COOLING MODE,
THE AMBIENT TEMPERATURE WILL BE REDUCED
BETWEEN *10 - 15°* FAHRENHEIT.

KoolBase